



PIEDMONT TRIAD
RURAL PLANNING ORGANIZATION

Randolph County CTP
Steering Committee Meeting # 6
Monday, April 21, 2025 at 2:00 pm

Location: Asheboro Recreation Center, Asheboro NC (Virtual Option Available: Link - **TBA**)

Agenda

1. Welcome & Previous Meeting Summary *Carter Spradling (PTRC)*
2. Update on the CTP Progress *Michael Abuya, Sangwoo "Marty" Sung, PhD (NCDOT TPD)*
 - a. Randolph County CTP Future Socio-economic Data Projection Endorsement Update
3. Base Year Highway Analysis Preliminary Results
Michael Abuya, Sangwoo "Marty" Sung, PhD (NCDOT TPD)
 - a. Base Year Highway Volume and Capacities Maps
 - b. Highway Crash Locations Maps
 - c. Bridge Deficiencies Map
4. Upcoming Schedule (Tentative)
 - a. Base Year Bicycle Pedestrian Analysis and Preliminary Results
 - b. Base Year Public Transportation Analysis and Preliminary Results
5. Next Meeting: _____

Appendix #1: The Randolph County CTP Website

<https://tinyurl.com/Randolph-County-CTP>



Appendix #2: Base Year Highway Volume and Capacities Maps, Highway Crash Locations Maps and Bridge Deficiencies Map

Figure 2
2022 VOLUME AND CAPACITY DEFICIENCIES



RANDOLPH COUNTY
 CTP Analysis and Information

Volume and Capacity Ratio Features
 (Base Year 2022)

2022 Volume Capacity	Under Capacity (0-0.79)
2022 Volume Capacity	Near Capacity (0.80-0.99)
2022 Volume Capacity	Over Capacity (1.00+)

Other Features

- Studied Roads
- High Point MPO
- Piedmont Triad RPO



Full report at:
<https://tinyurl.com/4k2xucan>



Sheet 1 of 5

Base map date: April 04, 2024

Legal Disclaimer

This product contains mapping data for informational and planning purposes only, and is subject to change. Users should review or consult the primary data sources to ascertain the usability of the information.

WORKING COPY
 Plan Date: April 14, 2025

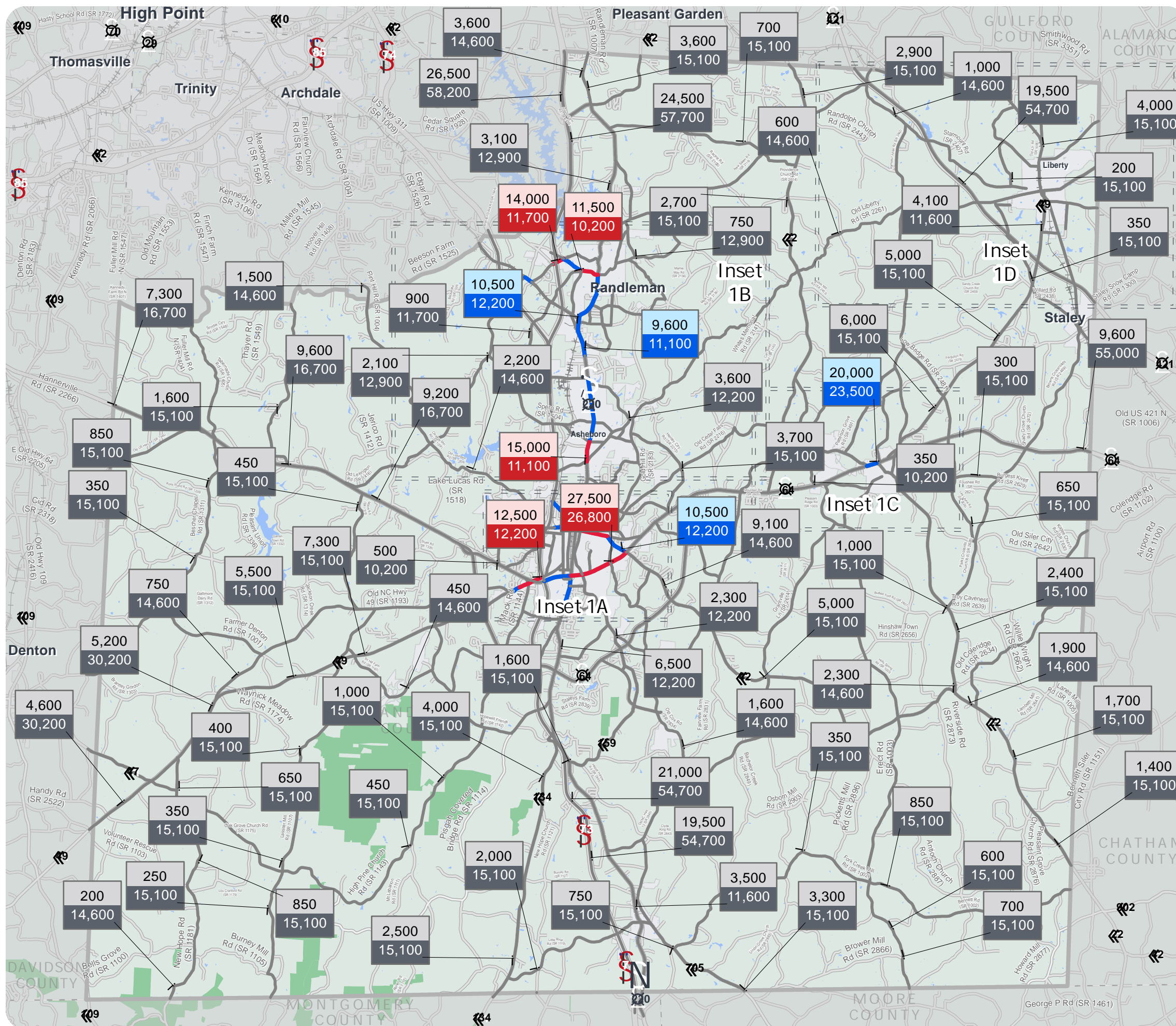


Figure 2
2022 VOLUME AND CAPACITY DEFICIENCIES



RANDOLPH COUNTY
 CTP Analysis and Information

Volume and Capacity Ratio Features
 (Base Year 2022)

2022 Volume Capacity	Under Capacity (0-0.79)
2022 Volume Capacity	Near Capacity (0.80-0.99)
2022 Volume Capacity	Over Capacity (1.00+)

Other Features

- Studied Roads
- High Point MPO
- Piedmont Triad RPO



Full report at:
<https://tinyurl.com/4k2xucan>



Sheet 1A of 5
 Asheboro Inset

Base map date: April 04, 2024

Legal Disclaimer

This product contains mapping data for informational and planning purposes only, and is subject to change. Users should review or consult the primary data sources to ascertain the usability of the information.

WORKING COPY
 Plan Date: April 14, 2025

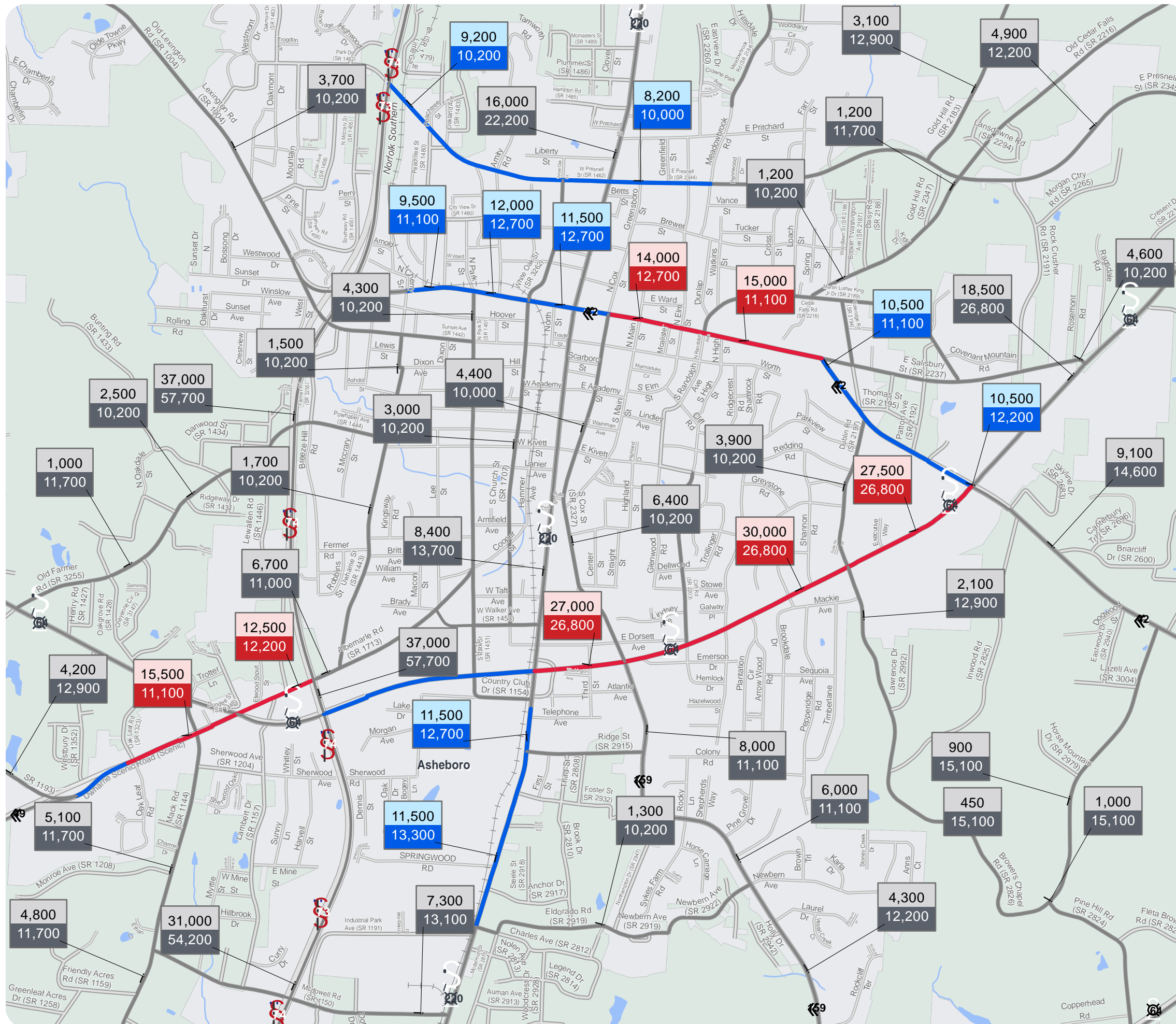


Figure 2
2022 VOLUME AND CAPACITY DEFICIENCIES



RANDOLPH COUNTY
 CTP Analysis and Information

Volume and Capacity Ratio Features
 (Base Year 2022)

	Under Capacity (0-0.79)
	Near Capacity (0.80-0.99)
	Over Capacity (1.00+)

Other Features

- Studied Roads
- High Point MPO
- Piedmont Triad RPO



Full report at:
<https://tinyurl.com/4k2xucan>



Sheet 1B of 5
 Randleman Inset

Base map date: April 04, 2024

Legal Disclaimer

This product contains mapping data for informational and planning purposes only, and is subject to change. Users should review or consult the primary data sources to ascertain the usability of the information.

WORKING COPY
 Plan Date: April 14, 2025

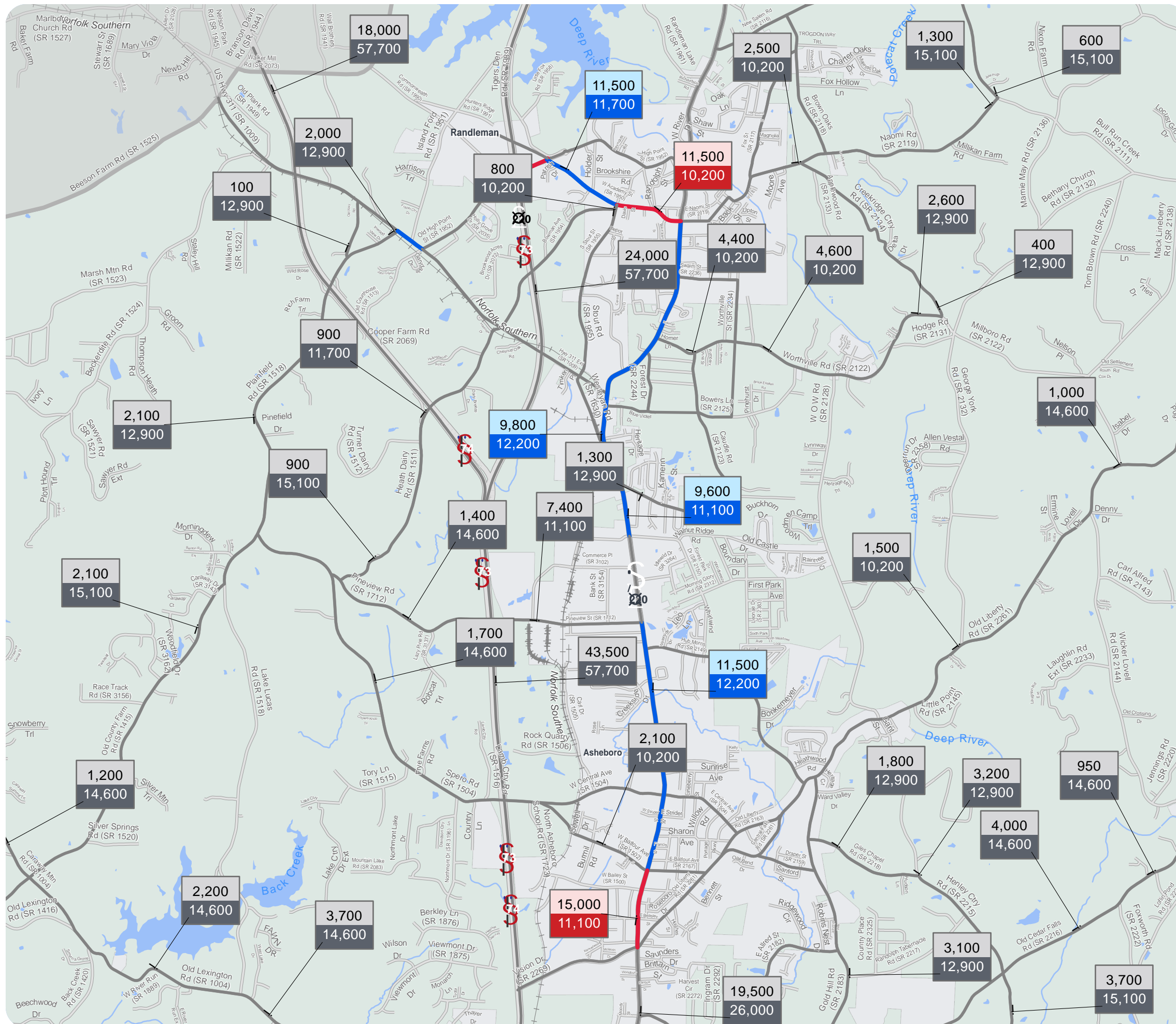


Figure 2
2022 VOLUME AND CAPACITY DEFICIENCIES



RANDOLPH COUNTY
 CTP Analysis and Information

Volume and Capacity Ratio Features
 (Base Year 2022)

- 2022 Volume
Capacity Under Capacity (0-0.79)
- 2022 Volume
Capacity Near Capacity (0.80-0.99)
- 2022 Volume
Capacity Over Capacity (1.00+)

Other Features

- Studied Roads
- High Point MPO
- Piedmont Triad RPO



Full report at:
<https://tinyurl.com/4k2xucan>



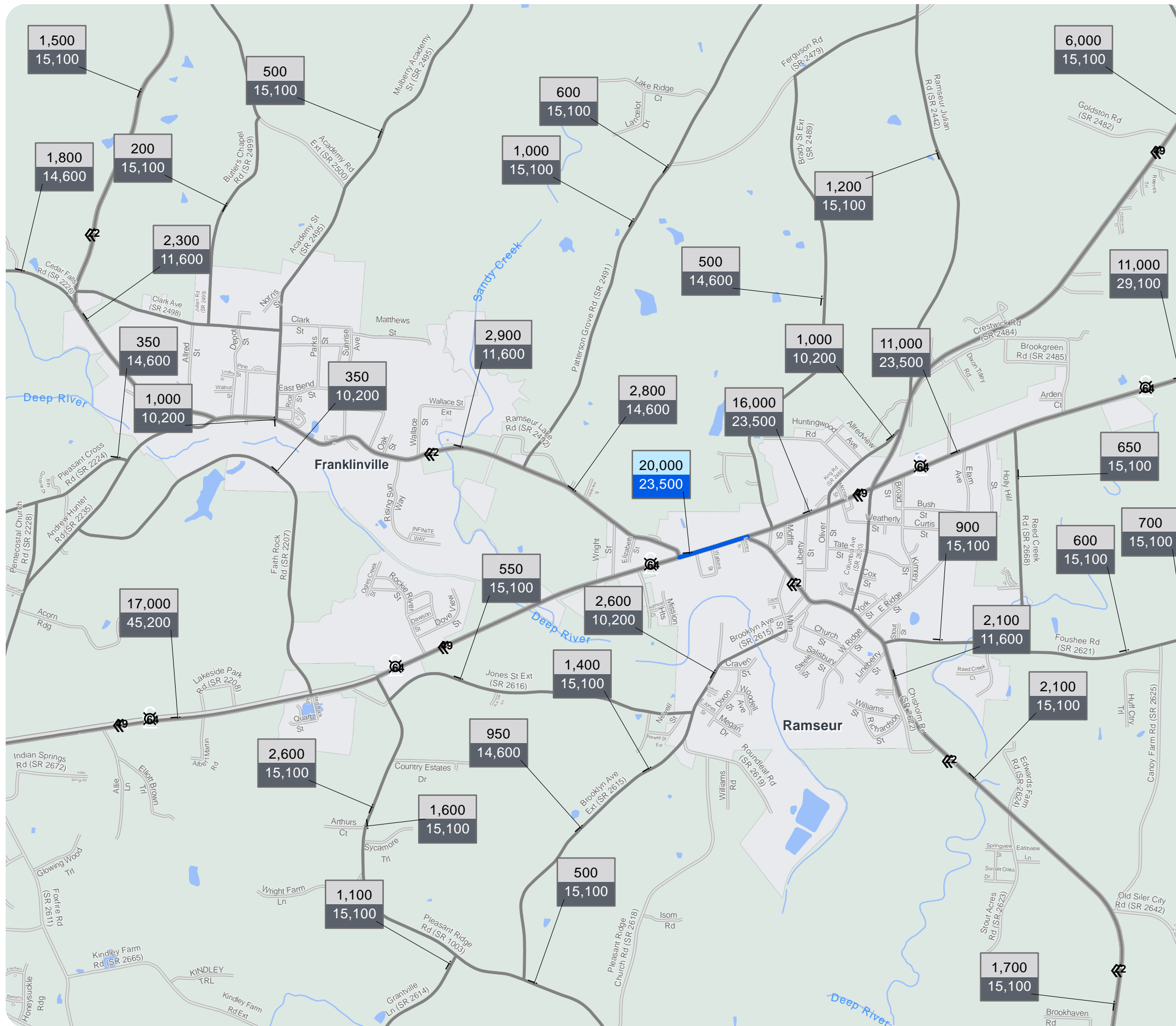
Sheet 1C of 5
 Ramseur Inset

Base map date: April 04, 2024

Legal Disclaimer

This product contains mapping data for informational and planning purposes only, and is subject to change. Users should review or consult the primary data sources to ascertain the usability of the information.

WORKING COPY
 Plan Date: April 14, 2025



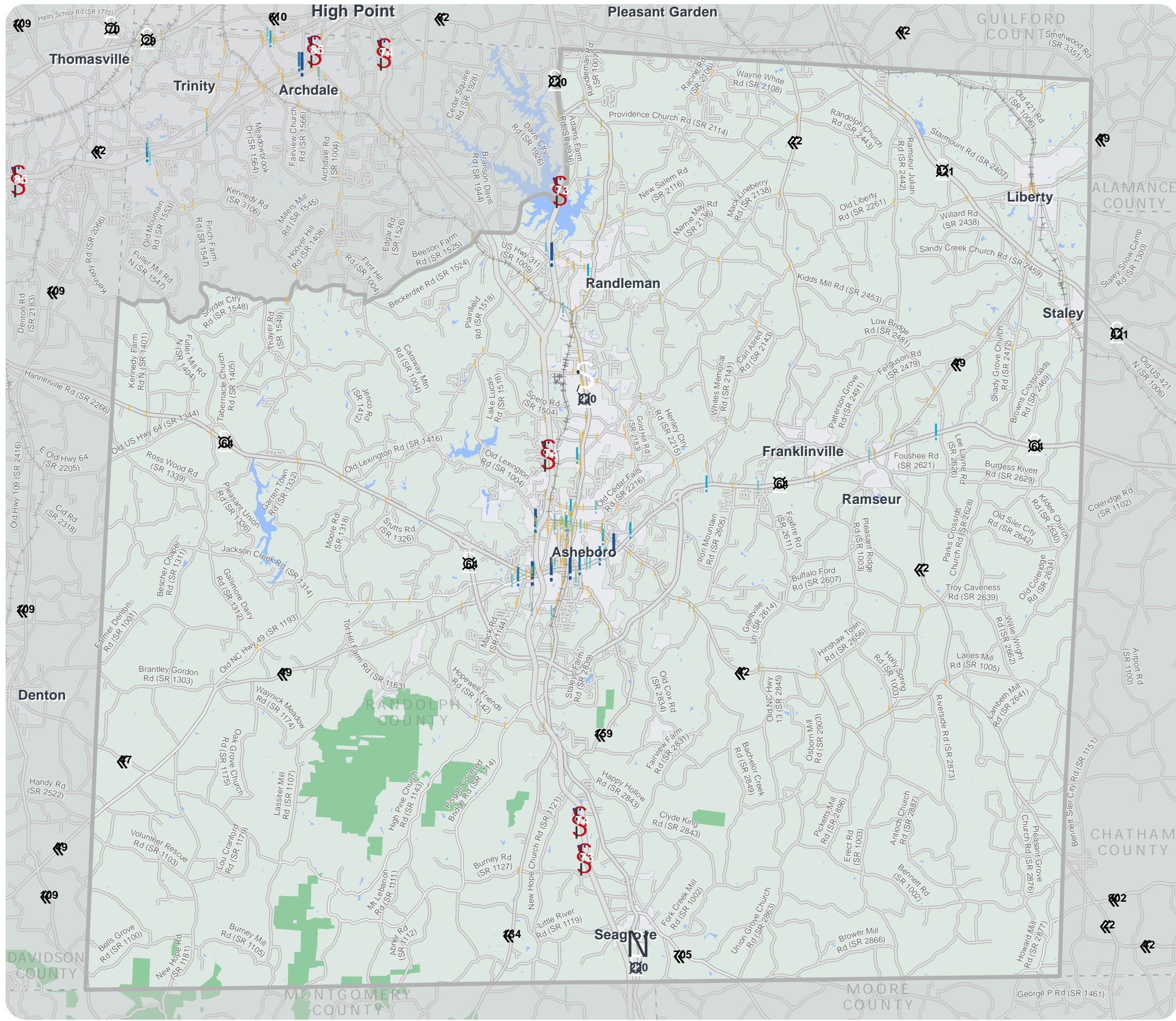


Figure 5
**PLANNING LEVEL
 CRASH LOCATIONS**



RANDOLPH COUNTY

CTP Analysis and Information

Planning Level Crash Features
 (January 2015 - December 2019)

Total Crashes	Intersection	Road Section
5 - 9		
10 - 19		
20 - 29		
30 - 39		
40 - 49		
50 and above		

Other Features

- Study Road
- High Point MPO
- Piedmont Triad RPO



Full report at:
<https://tinyurl.com/4k2xucan>



Sheet 2 of 3

Base map date: April 04, 2024

Legal Disclaimer

This product contains mapping data for informational and planning purposes only, and is subject to change. Users should review or consult the primary data sources to ascertain the usability of the information.

WORKING COPY
 Plan Date: April 11, 2025

Figure 5
**PLANNING LEVEL
 CRASH LOCATIONS**



RANDOLPH COUNTY

CTP Analysis and Information

Planning Level Crash Features
 (January 2015 - December 2019)

Total Crashes	Intersection	Road Section
5 - 9		
10 - 19		
20 - 29		
30 - 39		
40 - 49		
50 and above		

Other Features

- Study Road
- High Point MPO
- Piedmont Triad RPO



Full report at:
<https://tinyurl.com/4k2xucan>

0 0.1 0.2 0.4 0.6 0.8
 Miles

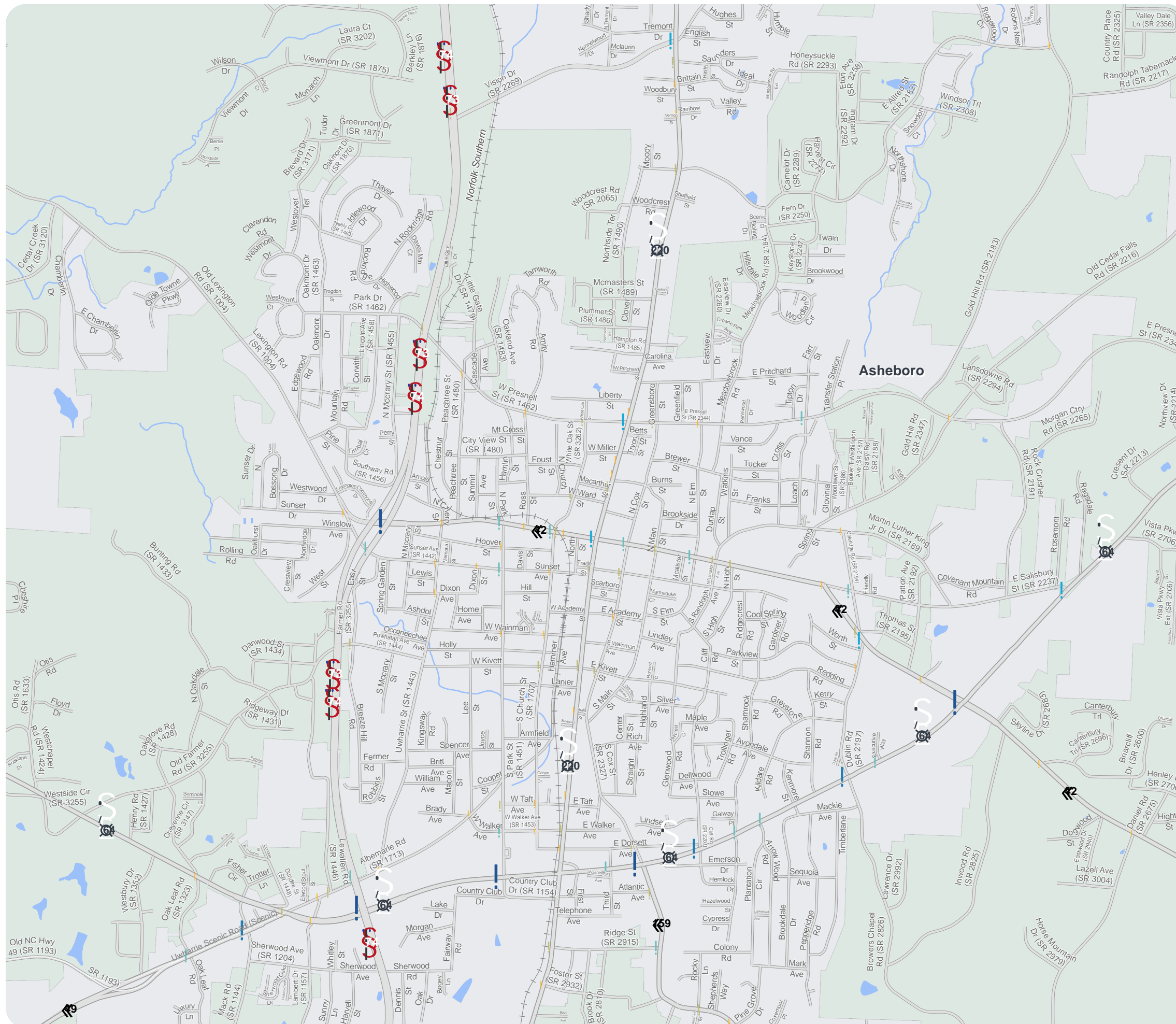
Sheet 2 of 3

Base map date: April 04, 2024

Legal Disclaimer

This product contains mapping data for informational and planning purposes only, and is subject to change. Users should review or consult the primary data sources to ascertain the usability of the information.

WORKING COPY
 Plan Date: April 11, 2025



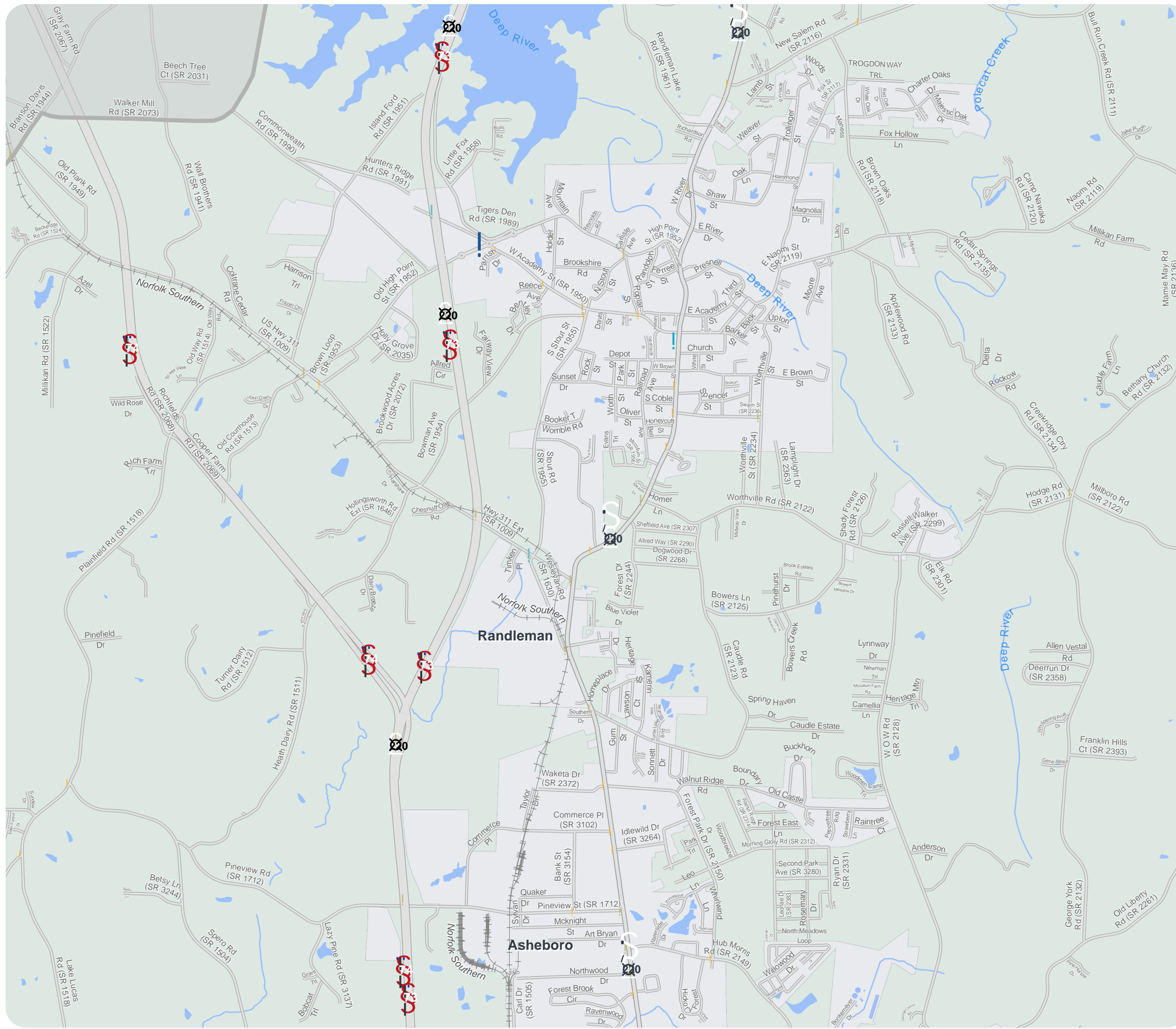


Figure 5
**PLANNING LEVEL
 CRASH LOCATIONS**



RANDOLPH COUNTY

CTP Analysis and Information

Planning Level Crash Features
 (January 2015 - December 2019)

Total Crashes	Intersection	Road Section
5 - 9	Short dashed line	Thin yellow line
10 - 19	Medium dashed line	Thin green line
20 - 29	Long dashed line	Thin blue line
30 - 39	Very long dashed line	Medium blue line
40 - 49	Very long dashed line	Thick blue line
50 and above	Very long dashed line	Thickest blue line

Other Features

- Study Road
- High Point MPO
- Piedmont Triad RPO



Full report at:
<https://tinyurl.com/4k2xucan>



Sheet 2 of 3

Base map date: April 04, 2024

Legal Disclaimer

This product contains mapping data for informational and planning purposes only, and is subject to change. Users should review or consult the primary data sources to ascertain the usability of the information.

WORKING COPY
 Plan Date: April 11, 2025

Figure 6

BRIDGE DEFICIENCIES



RANDOLPH COUNTY

CTP Analysis and Information

Bridge Features

! Deficient Bridge

Bridge

Other Structure

Other Features

Study Road

High Point MPO

Piedmont Triad RPO



Full report at:
<https://tinyurl.com/4k2xucan>

0 0.75 1.5 3 4.5 6 Miles

Sheet 3 of 3

Base map date: April 04, 2024

Legal Disclaimer

This product contains mapping data for informational and planning purposes only, and is subject to change. Users should review or consult the primary data sources to ascertain the usability of the information.

WORKING COPY
Plan Date: April 11, 2025

